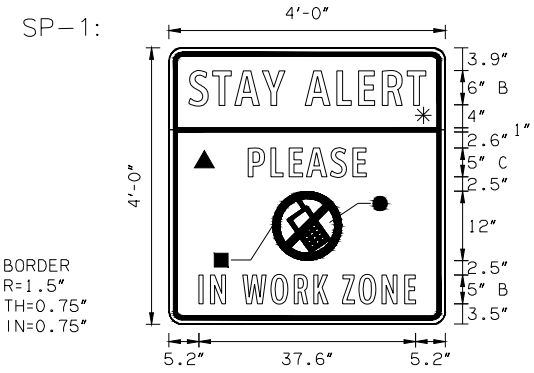
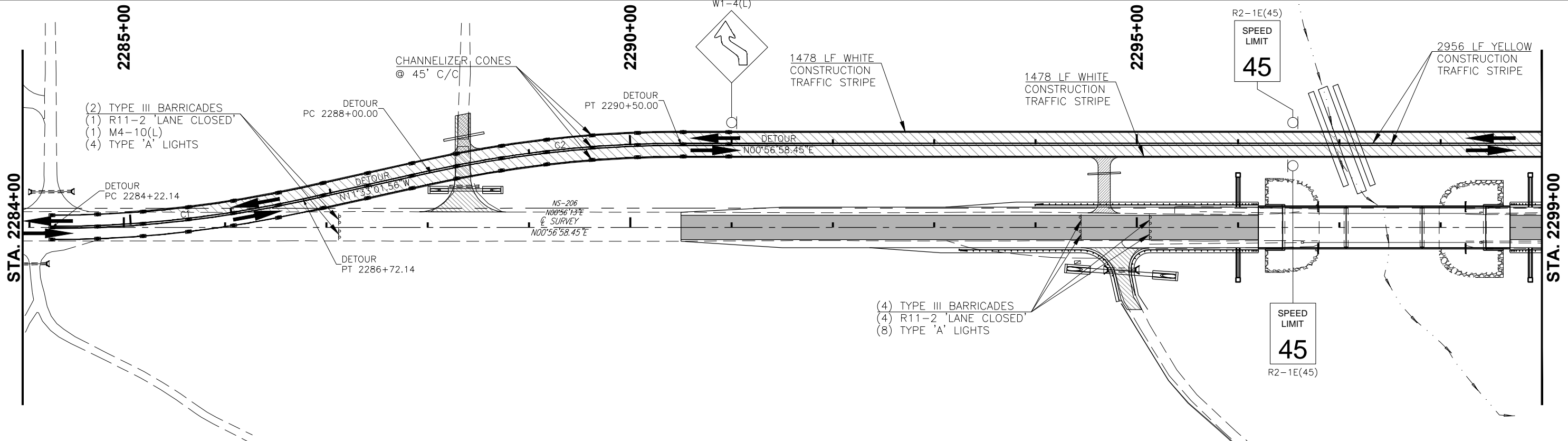
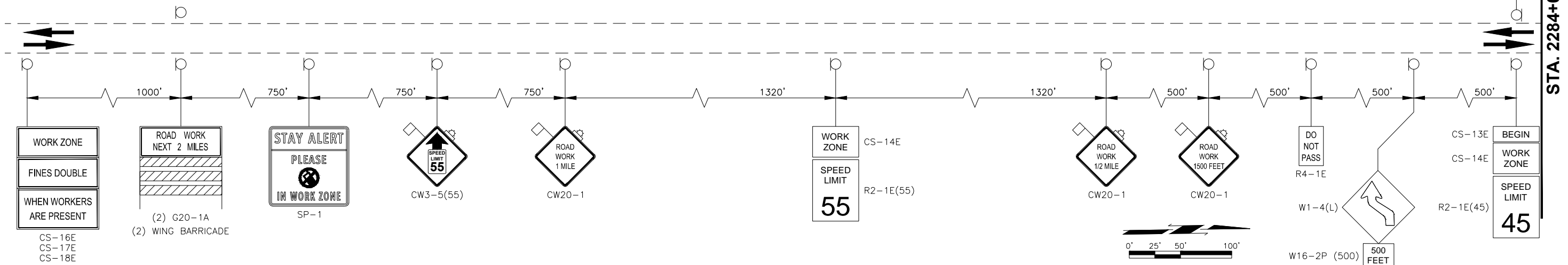


DESCRIPTION	REVISIONS	DATE



- COLOR:  
 LEGEND, SYMBOL AND BORDER:  
 BLACK (NON-REFLECTORIZED)  
 RED (TRANSPARENT REFLECTORIZED)  
 BACKGROUND:  
 FLUORESCENT ORANGE (REFLECTORIZED)  
 FLUORESCENT YELLOW (REFLECTORIZED)  
 WHITE (REFLECTORIZED)
- BLACK (NON-REFLECTORIZED)
  - ▲ FLUORESCENT ORANGE (REFLECTORIZED)
  - \* FLUORESCENT YELLOW (REFLECTORIZED)
  - WHITE (REFLECTORIZED)



FILENAME: 44 TRAFFIC CONTROL (SHEET 2 OF 2).DWG

DESIGN	SH-34 OVER S. PERSIMMON CREEK	WOODWARD COUNTY
DRAWN		
CHECKED		
CEC	STATE JOB NO. 28825(04)	SHEET NO. 43

**TRAFFIC CONTROL  
(SHEET 1 OF 2)**